



School District of Palm Beach County

The Systematic Approach: Bullying and Title IX



Diane Wyatt, Director of Safe Schools

Diane.Wyatt@palmbeachschools.org

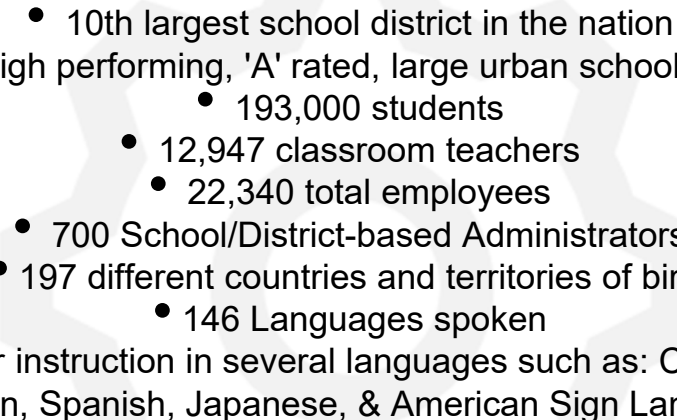
A Top High-Performing A-Rated School District

MORE OF
EVERYTHING YOU
WANT FOR
YOUR CHILD

 PALM BEACH COUNTY SCHOOLS
Your **BEST** Choice!

PALM BEACH COUNTY

OVERVIEW

- 
- 10th largest school district in the nation
 - A high performing, 'A' rated, large urban school district
 - 193,000 students
 - 12,947 classroom teachers
 - 22,340 total employees
 - 700 School/District-based Administrators
 - 197 different countries and territories of birth
 - 146 Languages spoken
 - District schools offer instruction in several languages such as: Chinese, French, Italian, Latin, Spanish, Japanese, & American Sign Language

LANDSCAPE

SDPBC

DEMOGRAPHICS



What is Title IX?



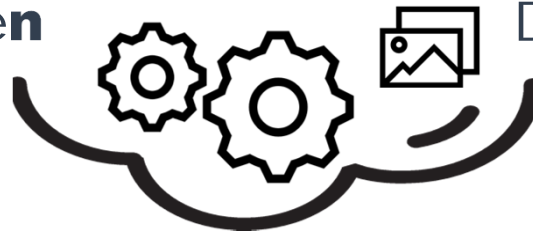
Title IX

20 U.S.C. § 1681 & 34 C.F.R. Part 106 (1972)

“No person in the United States shall, on the basis of sex, be excluded from participation in, be denied the benefits of, or be subjected to discrimination under any educational program or activity receiving federal financial assistance.”

IX

Statute Driven



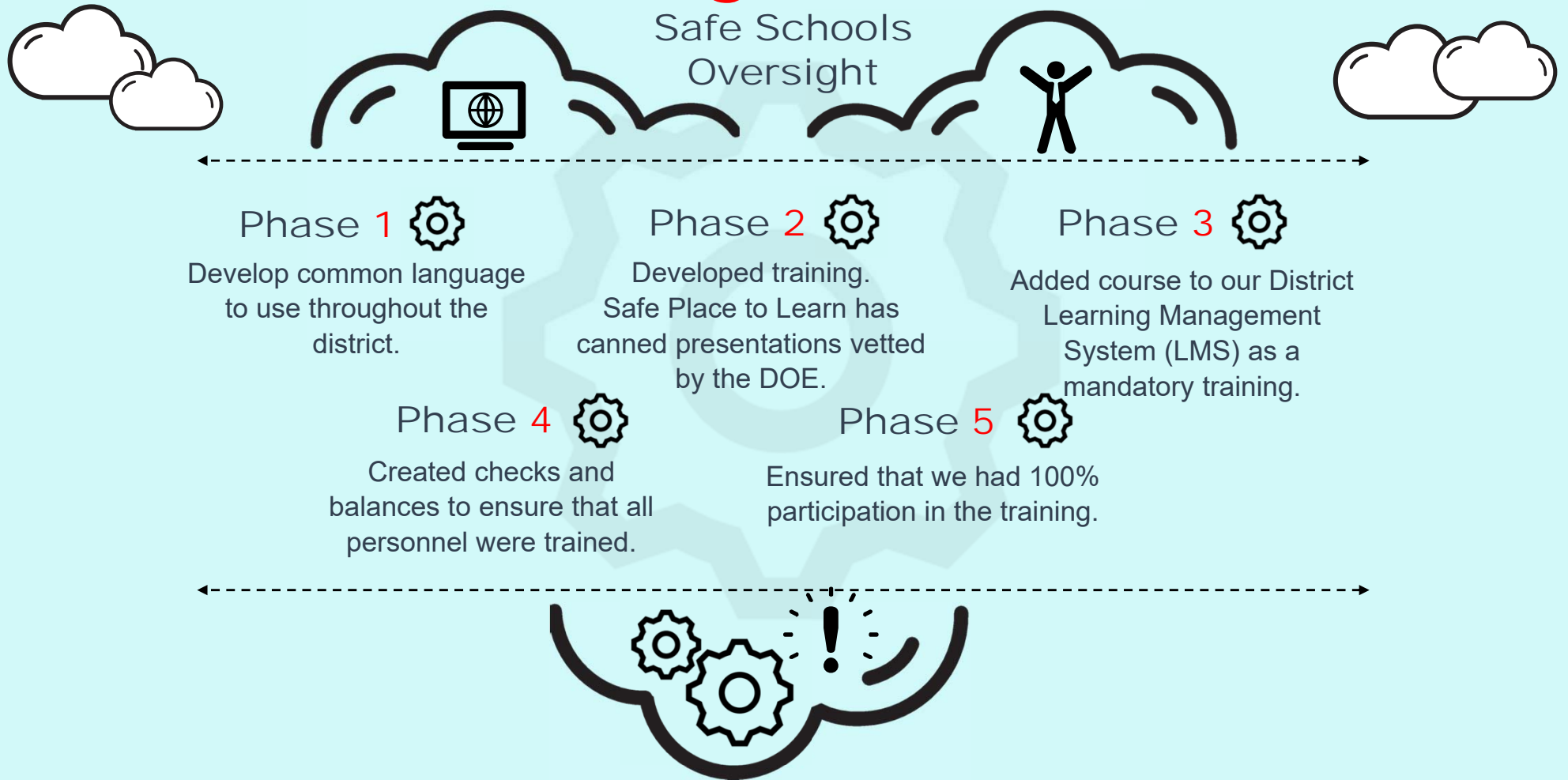
District Process
Required



HISTORY



Educating the District



TRAININGS

SPECIALIZED



- National Training Certifications (Certified Civil Rights Investigator & Title IX Coordinator)
- Tier Training for all Employees & specific training for School Based Administrators
- Began training in October 2017.

THE MORE YOU EDUCATE

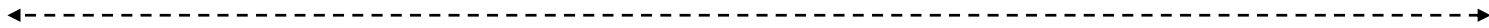
THE SAFER THE ENVIRONMENT



District-wide TRAINING



LMS - eLM



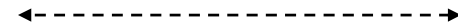
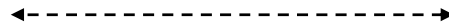
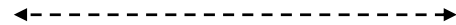
YEAR 1



YEAR 2



YEAR 3



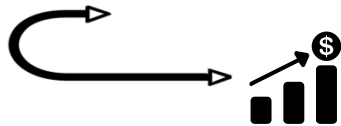
Trained the entire
district.
25,000 Employees

Trained all new
personnel.
6,536

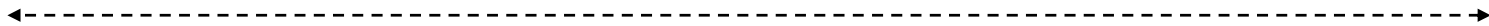
Refresher for all
employees.
26,000 Employees

\$0 SPENT on Training Materials

School-based Admin TRAINING



LMS - eLM



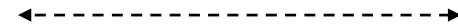
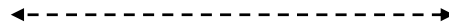
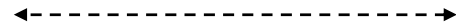
YEAR 1



YEAR 2



YEAR 3



Trained all Principals
and Assistant Principals.

647 Employees

Trained all new
Principals/Assistant
Principals.

Principals.

Refresher for all
employees.

26,000 Employees

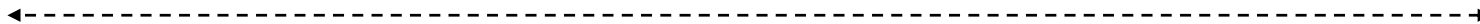
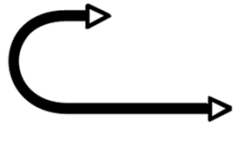
\$0 SPENT on Training Materials

FORMS



REPORTING

3 FORMS



PBSD **2508**



Initial report to District.
Determine Title IX or
Non-Title IX.



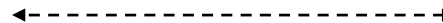
PBSD **2509**



Student Investigation
Summary Report

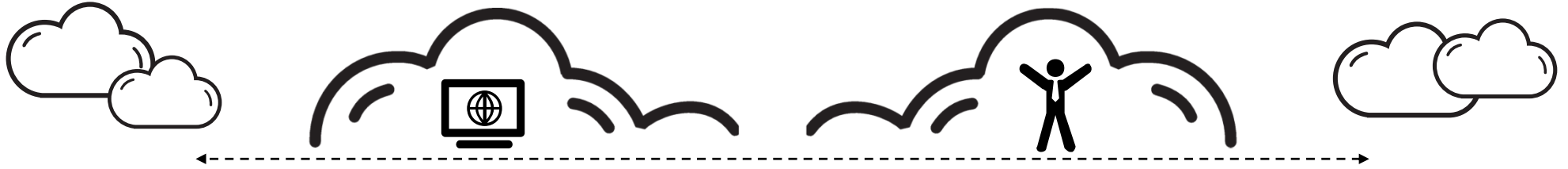


PBSD **2597**

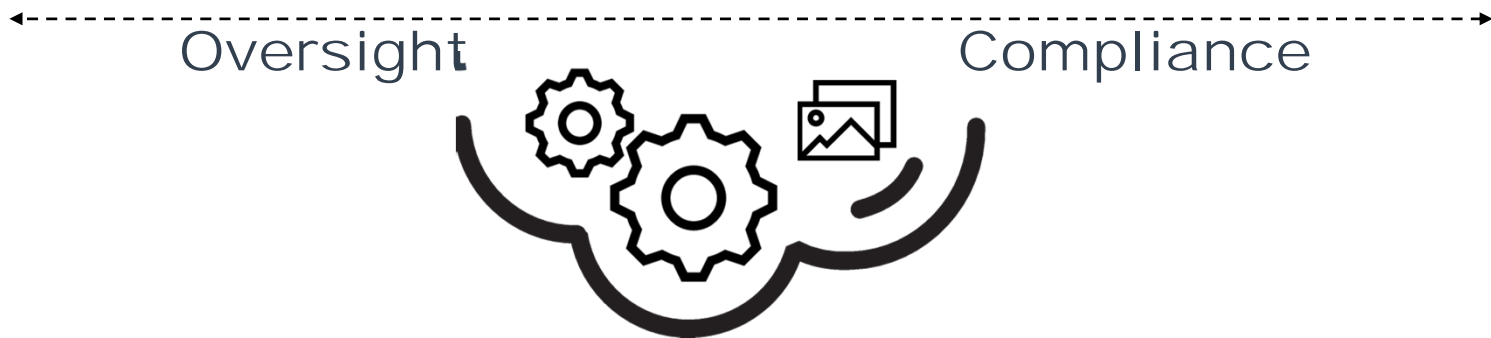


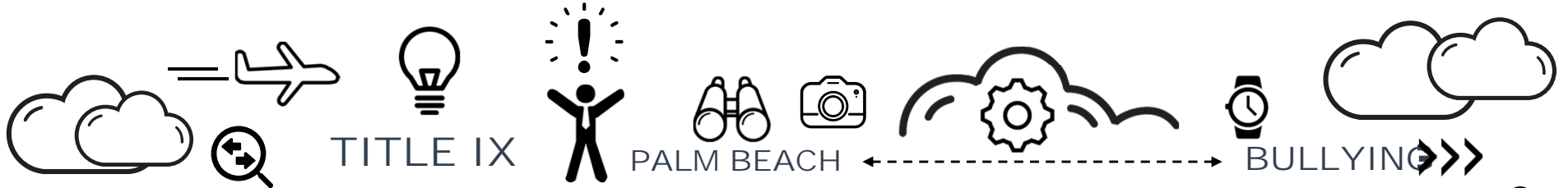
Student Investigation
Evidence Report

MONITORING



- Reports from the Bullying Google Form and the Bullying Hotline
- District Reporting of incidents using the District Forms
- School Trends that indicate a school might need additional support
- Use of Stay Away Agreements and Safety Plans
- New Administration Training Support





A Safe Place to Learn





Diane Wyatt, Director of Safe Schools

Diane.Wyatt@palmbeachschools.org

